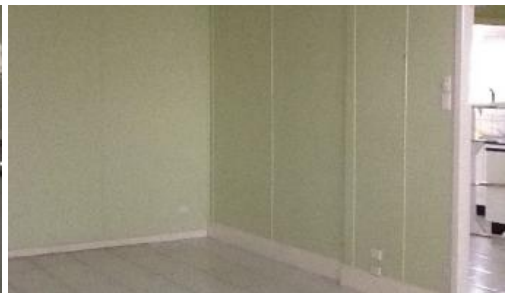




1 Theodore Street, Brassall



BRASSALL

Lowset 3 bedroom home on a corner block. The bedrooms are equipped with ceiling fans and built-in ward-robes. Good size tiled lounge and dining area. The modern kitchen features an island bench and plenty of cupboard space. The toilet is separate from the bathroom. This property is equipped with a fenced yard, garden shed, solar panels and a double carport. Walk to Ipswich State High School and bus stops. Short drive to Riverlink Shopping Centre.

The above information provided has been furnished to us by the vendor/s. We have not verified whether or not that information is accurate and do not have any belief in one way or the other in its accuracy. We do not accept any responsibility to any person for its accuracy and do no more than pass it on. All interested parties should make and rely upon their own inquiries in order to determine whether or not this information is in fact accurate.

3 1 2

Price \$290 per week
Property Type Rental
Property ID 1022

Agent Details

Bronwyn Handley - 0421 926 276

Office Details

Ipswich
 83 Brisbane Rd Newtown QLD 4305
 Australia
 07 3202 3877

