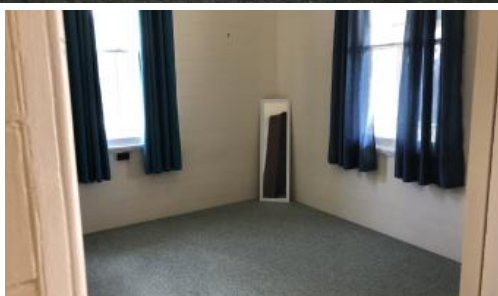




**327 Limestone Ridges Rd, Peak Crossing**



## Country living

3 bedroom colonial farmhouse situated near Peak Crossing township. This property is located on a larger property, but offers a standard house sized block. The air conditioned lounge is spacious with room for all the mod cons of today's living. A renovated kitchen features great cupboard space and plenty of room for a kitchen table. The bathroom is also renovated and has a good sized shower.

3 bedrooms are excellent sizes and have some cupboard and drawer space available. A good sized sleepout has great light and ideal for a sewing or craft room.

Internal laundry for ease of the weekly chore.

Relax on the front verandah overlooking the land or watching your veggie's grow (if you decide to grow veggies!) A single carport and garden shed is available.

This property is on tank water only, but offers around 25,000 litres. The set up is ideally suited to a retired couple.

This information has been provided to us by third parties and we do not accept any responsibility for its accuracy. You should make your own enquiries and check the information so as to determine whether or not this information is in fact accurate. You must make your own assessment and obtain professional advice if necessary.

3 1 1

**Price** \$260 Country living, suitable for a retired couple

**Property Type** Rental

**Property ID** 1432

### Agent Details

Bronwyn Handley - 0421 926 276

### Office Details

Newtown  
83 Brisbane Rd Newtown QLD 4305  
Australia  
07 3202 3877



The above information provided has been furnished to us by the vendor/s. We have not verified whether or not that information is accurate and do not have any belief in one way or the other in its accuracy. We do not accept any responsibility to any person for its accuracy and do no more than pass it on. All interested parties should make and rely upon their own inquiries in order to determine whether or not this information is in fact accurate.