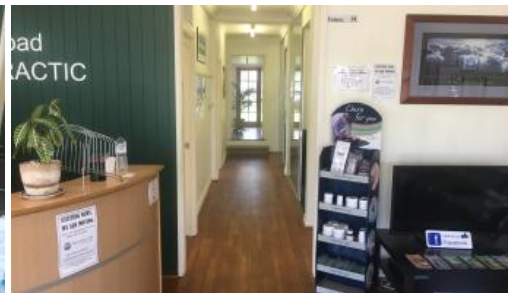
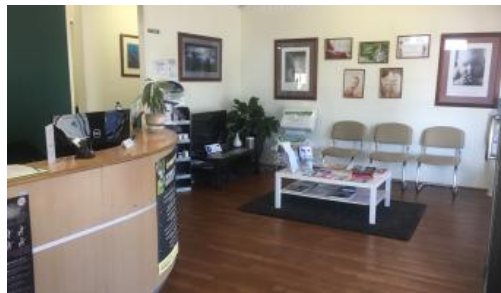




69 Glebe Rd, Silkstone



Commercial investment of great tenants

Tenancy 1—

Lease 01.10.2019—30.09.2022 with 3 + 3 year options

Rent: \$27,429 pa gross

Security Bond: \$2,200

Area: 125sqm approximately

Use: Skin Care Clinic

4 x rooms/offices, storeroom, large reception and waiting area, staffroom with kitchen and bathroom facilities including shower, 1 undercover park and extra onsite parking with ample unmetered on street parking for clients

Tenancy 2—

Leased since 01.06.2021—31.10.2022 with 1 + 1 year options

Rent: \$15,456 pa gross

Security Bond: \$4656.67

Area: 70sqm approximately

Use: Psychology Clinic

3 x treatment rooms/offices, 1 x reception/waiting area, kitchen and exclusive onsite amenities, 1 undercover parking and extra onsite parking with ample unmetered on street parking for clients.

52 607 m2

Price	SOLD
Property Type	Commercial
Property ID	1552
Land Area	607 m2
Office Area	195 m2

Agent Details

Bronwyn Handley - 0421 926 276

Office Details

Ipswich
83 Brisbane Rd Newtown QLD 4305
Australia
07 3202 3877



This information has been provided to us by third parties and we do not accept any responsibility for its accuracy. You should make your own enquiries and check the information so as to determine whether or not this information is in fact accurate. You must make your own assessment and obtain professional advice if necessary.

The above information provided has been furnished to us by the vendor/s. We have not verified whether or not that information is accurate and do not have any belief in one way or the other in its accuracy. We do not accept any responsibility to any person for its accuracy and do no more than pass it on. All interested parties should make and rely upon their own inquiries in order to determine whether or not this information is in fact accurate.