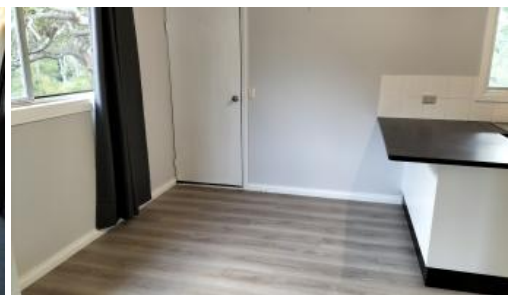




**16 Bremer Pde, Basin Pocket**



## Great value

This 3 bedroom highset home has had a mini makeover with fresh paint internally and externally and new floorcoverings recently .

Located in a cul de sac street, this highset home offers 3 bedrooms with fans and robes.

A large lounge will take any size furniture and also has split system airconditioning and fan.

A kitchen/dining room has good bench space and a pantry and overlooks the back yard and the river.

The bathroom has a separate shower and bath and separate toilet. A linen cupboard in the hallway is adequate for storage.

Under the house is great for 2 vehicles and workshop or games area, but offers great storage.

There is a small deck off the dining room, but a great paved entertainment area in the back yard. The property offers fencing, but not adequate for large animals. Plenty of room for the trampoline and the swing set. The house is fully screened with security doors front and back.

Located close to all amenities, this property will not last long.

Please note rent will increase to \$550 2 months after lease commencement, so enjoy the discount initially.

 3  1  2

**Price** \$480 per week  
**Property Type** Rental  
**Property ID** 1715

### Agent Details

Bronwyn Handley - 0421 926 276

### Office Details

Newtown  
 83 Brisbane Rd Newtown QLD 4305  
 Australia  
 07 3202 3877



This information has been provided to us by third parties and we do not accept any responsibility for its accuracy. You should make your own enquiries and check the information so as to determine whether or not this information is in fact accurate. You must make your own assessment and obtain professional advice if necessary.

The above information provided has been furnished to us by the vendor/s. We have not verified whether or not that information is accurate and do not have any belief in one way or the other in its accuracy. We do not accept any responsibility to any person for its accuracy and do no more than pass it on. All interested parties should make and rely upon their own inquiries in order to determine whether or not this information is in fact accurate.