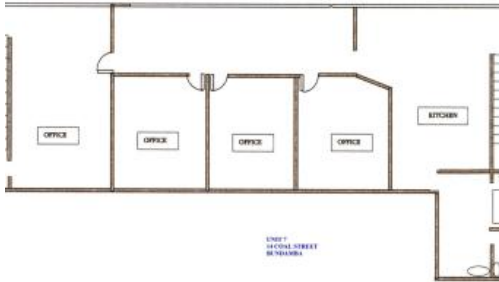


Leased



## Affordable Offices

- ~ 109\*sqm Office Space
- ~ 4 x Offices
- ~ Reception area
- ~ Kitchenette
- ~ Staff Facilities
- ~ Onsite parking
- ~ 200\*m to Brisbane Road

1st floor offices, good onsite car parking and air conditioned. Close to public transport and only 200\*metres to Brisbane Road. Adjoining Unit 1 (Ground Floor) available for lease if larger space needed.

\$16,350\*PA + GST + OGs (\$2,040\*PA) = \$1,362.50\*per Month + GST + OGs.

\* Approximately

The above information provided has been furnished to us by the vendor/s. We have not verified whether or not that information is accurate and do not have any belief in one way or the other in its accuracy. We do not accept any responsibility to any person for its accuracy and do no more than pass it on. All interested parties should make and rely upon their own inquiries in order to determine whether or not this information is in fact accurate.

109 m2

**Price** \$16,350\*PA + GST + OGs

**Property Type** Commercial

**Property ID** 467

**Land Area** 109 m2

**Office Area** 109 m2

**Floor Area** 109 m2

### Agent Details

Bronwyn Handley - 0421 926 276

### Office Details

Ipswich  
83 Brisbane Rd Newtown QLD 4305  
Australia  
07 3202 3877

