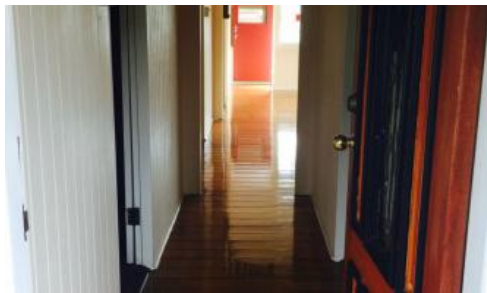




**1B Thompson Street, Silkstone**



## Paint me and I am Perfect

The exterior hides this home, and there are many surprises inside.

This family Character home features polished timber floors and beautiful coloured sliding windows in the Dining room. The spacious Lounge room is separated from the Dining room by timber fretwork. The Lounge room has the bonus of a Wood Burning Heater for winter and a ceiling fan for summer. The kitchen is original and features good bench space and plenty of cupboards plus a centre workbench. However, it is large enough to take a table and chairs as well as the formal Dining area.

There are three bedrooms, two with new carpet, and all are fitted with ceiling fans. The home has a front sleep out that is perfect for a home office, a second living area or a craft room. The Bathroom has recently been renovated and includes an upstairs Laundry. The home is walking distance to Booval Fair and is only a short drive from the Ipswich CBD. The bus stops at the front of the house and the location is walking distance to the Booval Train Station.

The property has a carport for your vehicle and storage shed with the bonus of a covered cemented area for a table and chairs or this would make a beautiful area for some seating and your pot plants. There is a rainwater tank to support the native gardens and established vegie and herb beds.

This home is in a great location, on a manageable sized lot, with most of the

3 1 1 443 m2

<b>Price</b>	SOLD
<b>Property Type</b>	Residential
<b>Property ID</b>	511
<b>Land Area</b>	443 m2

### Agent Details

Bronwyn Handley - 0421 926 276

### Office Details

Ipswich  
83 Brisbane Rd Newtown QLD 4305  
Australia  
07 3202 3877



renovation work done. Call today for your inspection.

The above information provided has been furnished to us by the vendor/s. We have not verified whether or not that information is accurate and do not have any belief in one way or the other in its accuracy. We do not accept any responsibility to any person for its accuracy and do no more than pass it on. All interested parties should make and rely upon their own inquiries in order to determine whether or not this information is in fact accurate.