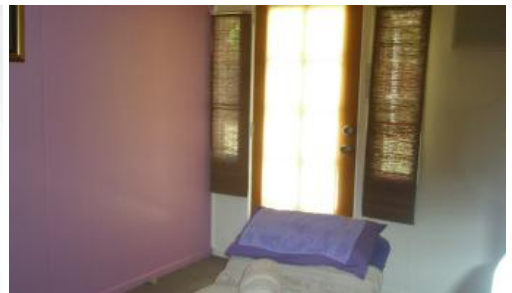




**Silkstone**



## Affordable and Well Positioned Suite

- ~ 3 x Treatment rooms/offices
- ~ 1 x reception area
- ~ Kitchenette
- ~ Exclusive Amenities
- ~ 1 x undercover Onsite parking for staff
- ~ Extra onsite parking
- ~ Ample unmetered on street parking for clients

A neat & tidy premises with private entry & good parking for both staff and client alike. These premises are located on a major road and would suit beauty, allied health, or professional offices.

Available now phone to book an inspection.

\$12,300\*PA Gross + GST = \$1,025\*per Month + GST

\* Approximately

The above information provided has been furnished to us by the vendor/s. We have not verified whether or not that information is accurate and do not have any belief in one way or the other in its accuracy. We do not accept any responsibility to any person for its accuracy and do no more than pass it on. All interested parties should make and rely upon their own inquiries in order to determine whether or not this information is in fact accurate.

1 150 m2

**Price** \$12,300\*PA Gross + GST

**Property Type** Commercial

**Property ID** 645

**Land Area** 150 m2

**Floor Area** 150 m2

### Agent Details

Bronwyn Handley - 0421 926 276

### Office Details

Ipswich  
83 Brisbane Rd Newtown QLD 4305  
Australia  
07 3202 3877

